



May 25, 2006

eNews and Views

Arts Partners and WSU Present Summer Dance/Movement Workshop July 10-12, 2006

Title: MUS E 751R No Child Left Behind Section 10494

Location: C107, Duerksen Fine Arts Center, Wichita State University

Dates/Times: July 10-12, noon to 5:00 p.m.

Description: This Arts Partners and WSU collaborative workshop features Dr. William Freeman, nationally recognized dance/movement therapist and founder of Accessible Arts, Inc. Dr. Freeman will present basic concepts of dance and movement that are appropriate for all learners. He will also demonstrate activities that enhance learning for students who have disabilities. He will assist participants in planning and teaching strategies that use movement and dance for meeting the unique needs of individual students within group settings. Participants should wear comfortable clothing. The workshop is limited to 15 participants.

Cost: \$167.40 (\$146.80 plus \$3.50 facilities fee plus \$17 registration fee)

Registration: Register at Jardine Hall (first floor) at WSU. Payment is due when you register. Register M-F, 8:15 a.m. to 4:45 p.m.; until 6:30 p.m. on June 5-6.

Questions?: Contact Dr. Elaine Bernstorf at elaine.bernstorf@wichita.edu or 978-6564.

Note: If you would like to be on the Arts Partners summer email list, please send your summer email address to liz@artspartnerswichita.org with "Summer email address" in the Subject heading.

Quotation of the Month

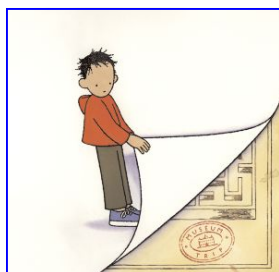
"The arts teach many of the skills, aptitudes and values that are at the heart of America's growing 'creative' economy and beyond."

Sir Ken Robinson
Senior Advisor, Education Policy
Getty Foundation

Copies of National Geographic: Yours for the Asking

Teachers interested in getting free National Geographics (there are more than 400 of them, spanning 40 years!) should email Carol Nazar at cnazar@wichita.lib.ks.us and let her know the number you would like to have. Please do so before 6/15/06. Pickup will be from a central location to be determined.

Book of the Month



Museum Trip by Barbara Lehman

Houghton Mifflin, 2006. ISBN: 0618581251

While the age level of this wordless picture book is 5-8, the book would make a good story writing prompt for students in grades 3-8. When his class visits a museum, a boy gets separated from the group and finds himself (or does he?) inside some of the museum exhibits. Is it real or imagined? What about the medal? Challenge your students to write a story explaining what really happened.

Arts Partners Summer Activities

During the summer, our staff will be busy preparing for the 2006-2007 school year as we work on new program development, provide artist training, write and publish the 2006-2007 *Arts Partners Program and Community Resources Directory*, and plan professional development activities for the next school year. We'll be here if you have any questions. Just call 262-4771.

Year-Round Part-Time Position Open Early Childhood Coordinator

The Early Childhood Coordinator (ECC) responds to inquiries about early childhood programs, maintains the early childhood files, completes all necessary paperwork for early childhood programs scheduled, coordinates evaluations, and assists with Arts Partners program activities. The ECC reports to the Program Director (Liz Kennedy, 262-4771). This position is classified as a part-time non-exempt (20 hours per week) hourly position.

**eNews and Views is a publication of Arts Partners
201 N. Water, Suite 300, Wichita, KS 67202.**

**Editor: Liz Kennedy, Arts Partners Program Director
Send news to liz@artspartnerswichita.org.**



a state agency, and the National Endowment
for the Arts, a federal agency.

This program is
presented in part
by the Kansas
Arts Commission,



This program is
made possible in
part by the City
of Wichita.